

### INSTRUCTION MANUAL

#### Description

Jaspi J-immersion heater is designed to work in thermal storage tanks, boilers, pipelines and various holding tanks. It must not be used to heat oil or flammable liquids. The connection is with 50mm (2") threads and the heater can be used in pressurised and open-vented systems. 3-Element J-heater has a main power switch, adjustable thermostat, overheating protection and the power indicator.

#### UK Models only

Jaspi J-Immersion heater is available in three-phase and single-phase versions.

The available power vary by model and are listed above.

#### Operation

To switch on, turn the main switch to position 1.

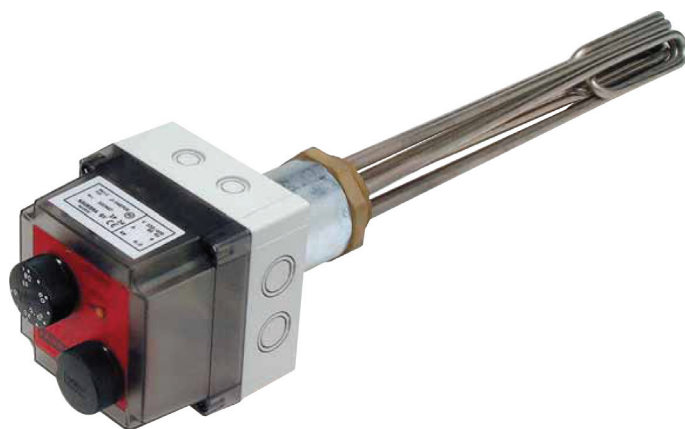
Adjust the thermostat to the desired temperature.

You can hear a 'click' when the immersion heater is in operation, the amber indicator turns on.

If there is no 'click' or the amber indicator is not lit, ensure the power supply to the heater is switched on.

Another possible cause is that the overheating protection has been activated. This can happen if the water level is too low, the water temperature has been particularly high or the heater has been subjected to excessive vibration.

To install, use PTFE tape to build up a thick seal. No o-ring or gasket should be used with these heaters.

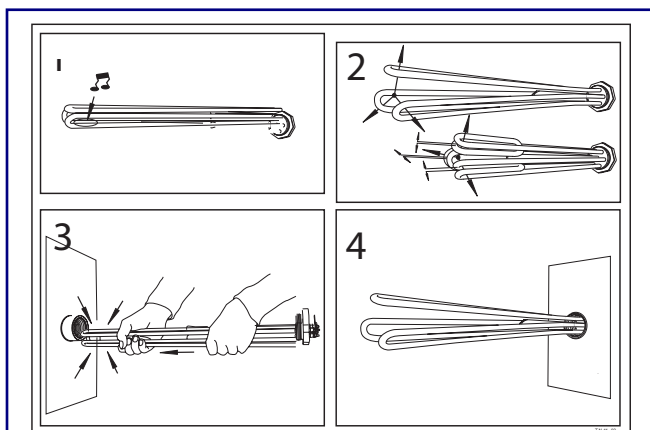


#### Overheating cut-off reset

After the cause for the overheat cut-off has been rectified, use a thin metal object to press down the reset button visible through the hole in the front of the heater. Keep pressed until you hear a 'click'.

#### Description

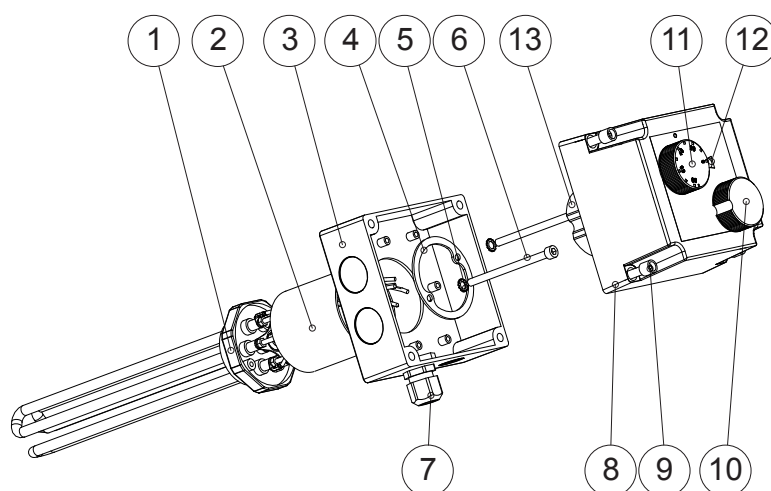
1. Heating element
2. Spacer
3. Enclosure bottom
4. Fixing plate
5. Locking washer M5 (2 pcs)
6. Locking screws M5 x 90 (2 kpl)
7. PK 16 cable strain relief
8. Enclosure top
9. Enclosure fixing screws, plastic (4 pcs)
10. Main switch
11. Adjustable thermostat 0 - 85 °C, overheating cut-off at 98 °C
12. Operating indicator
13. Insulation



#### IMPORTANT

Ensure the heating element's metal parts are not in contact with each other.

Carefully bend the elements slightly apart as shown above.



## IMPORTANT

Make sure the heating system is filled with water before switching the immersion heater on.

Even a short time of 'dry' running will break the heating elements and the overheating thermostat might not function properly.

Failure to comply with the above will invalidate the warranty immediately.

## Warranty

12 Months



## Specifications

Power kW	3,3	4,5	6,5	7,5
Code	5087000	5087005	5087010	5087012
Installation length [mm]	270	395	520	570
Orientation	Horizontal			
Coupling	R2" / 50mm			
Thermostat adjustment	0 - 85 °C			
Overheat thermostat	98 - 6 °C			

## Electrical schematic

