

FLUE GAS THERMOSTAT

For solid fuel boiler pump control

FUNCTION

This flue gas thermostat kit controls the heat loading unit or a heat transfer pump between the thermal store and the boiler.

When the flue reaches the selected temperature, the thermostat starts the pump and the heat is transferred from the boiler to the thermal store, heat exchanger or a radiator system.

When the boiler cools down, the thermostat will cut the power to the pump and the heat transfer is stopped.

Recommended thermostat setting is 60°C - 120°C.

INSTALLATION

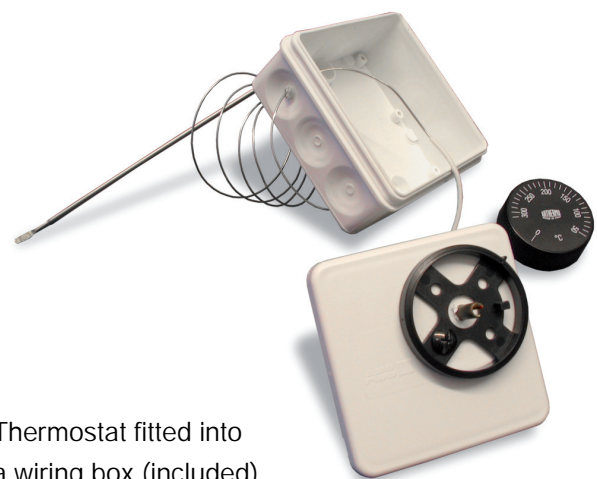
If your flue does not have a thermostat pocket, drill a small hole into the flue, fit a suitable screw & two metal washers and 'sandwich' the thermostat probe between the washers.

You can also tie the thermostat probe with a metal (no plastic parts) jubilee clip to the exposed part of the flue without drilling into the flue.

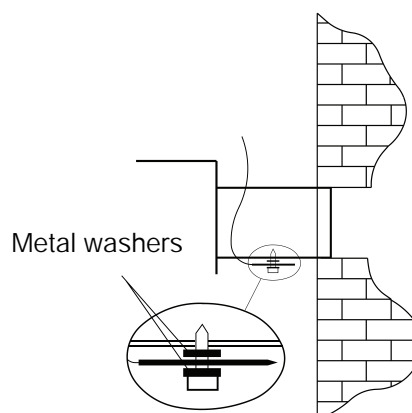
NOTE The thermostat probe must have a contact with a actual flue pipe, not the outer shield of the twin wall flue pipe.

There is no need to insulate the thermostat probe.

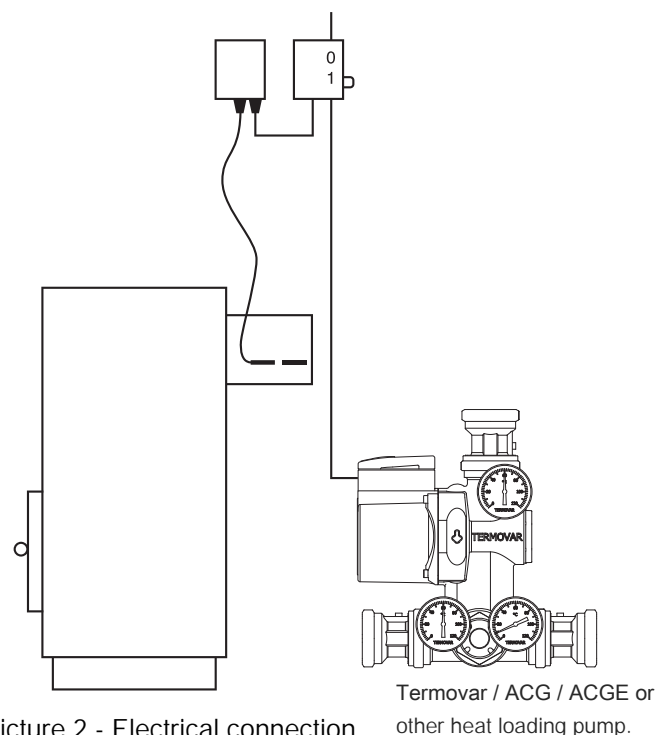
- Probe maximum temperature 300°C
- Maximum load 16(4)/250VAC



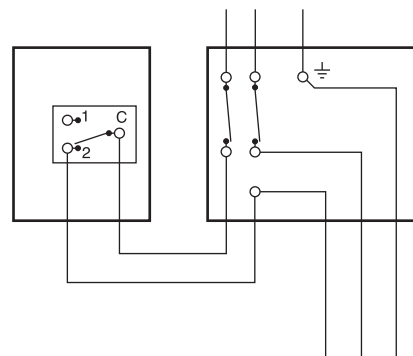
Thermostat fitted into a wiring box (included)



Picture 1 - Probe



Picture 2 - Electrical connection



Picture 3 - Thermostat

Contacts C and 2 are connected when the set temperature is reached / exceeded.